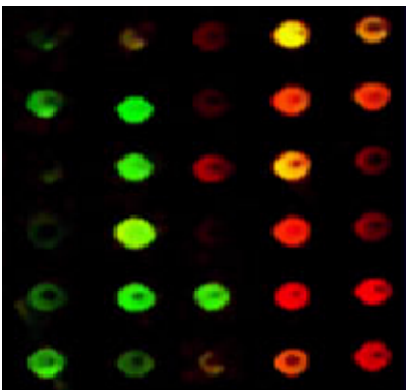
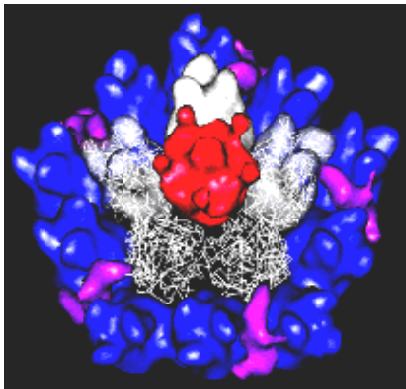
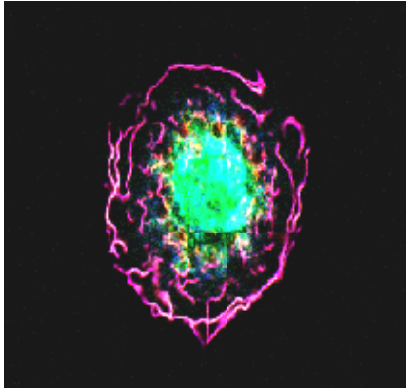


**CENTRO DE INVESTIGACION DEL CANCER  
CSIC-University of Salamanca, Spain**

# **POSTDOCTORAL POSITIONS**



**TWO POSTDOCTORAL POSITIONS** are available at the laboratory of **Dr. XOSÉ R. BUSTELO** for studying cytoskeletal regulators involved in cancer and other pathologies such as hypertension, cardiovascular disease and immunodeficiencies. Work in the lab includes the functional characterization of **Vav family oncoproteins, Rho/Rac and Ras GTPases, and both positive (GEF) and negative (GAPs) regulators of Ras superfamily GTPases**. We also have interest on **signal transduction pathways** mediated by tyrosine kinases that have an impact in the cell cytoskeleton, motility, and proliferation.

We are looking for postdoctoral fellows with demonstrated experience in some of the following techniques: **i)** generation and work with knockout animals, **ii)** signal transduction and Cell Biology, **iii)** cancer, **iv)** cardiovascular biology, **v)** neurobiology, **vi)** T-cell signaling or immunology.

Recent publications of our lab include Caloca et al. (2003) *EMBO J.* **22**: 3326; Llorca et al. (2005) *EMBO J.* **24**: 1330; Sauzeau et al. (2006) *Nature Medicine* **12**: 841; Berenjano et al. (2007) *Oncogene* **26**: 4295; Sauzeau et al. (2007) *Mol. Biol. Cell.* **18**: 943; Ruiz et al. (2007) *Mol. Cell. Biol.* **27**: 8127; Mithivanan et al. (2008) *Nature Biotechnol.* **26**: 164.

Further information about our lab and publications can be found at [www.cicancer.org](http://www.cicancer.org). Information about the city of Salamanca can be found at: [www.aboutsalamanca.com](http://www.aboutsalamanca.com).

**Positions are available immediately but incorporation dates are negotiable.**

Interested individuals should submit their CVs and at least two letters of reference to the e-mail address indicated below. Only candidates in the top list will receive further feed backs about the recruiting process.

**Dr. Xosé R. Bustelo**  
**Centro de Investigación del Cáncer**  
**CSIC-University of Salamanca**  
**Campus Unamuno**  
**37007 Salamanca, Spain, EU**  
**E-mail: [xbustelo@usal.es](mailto:xbustelo@usal.es)**